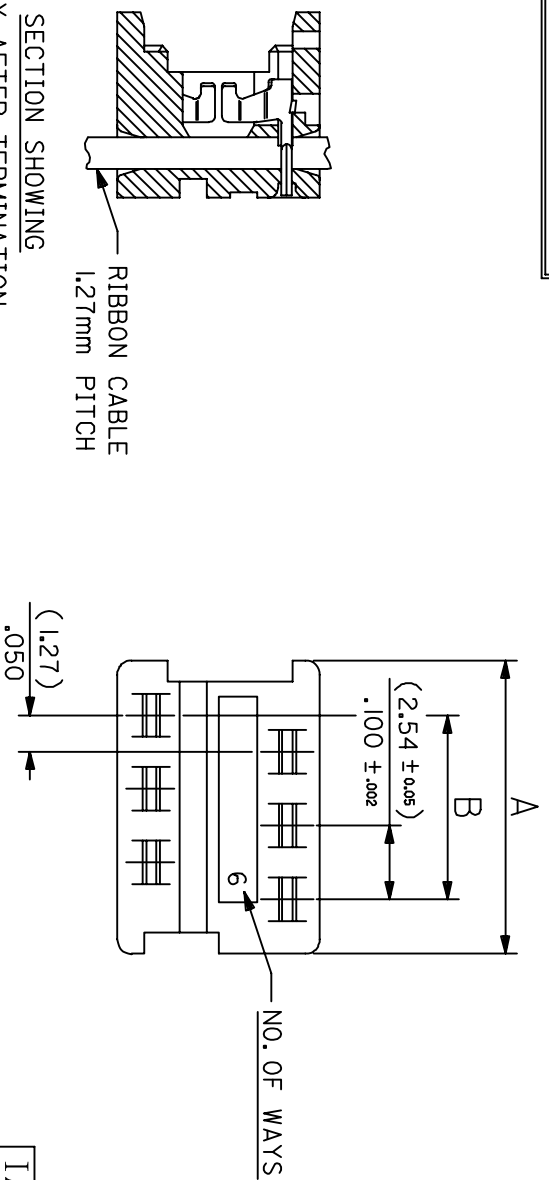


PROPERTY IN COPYRIGHT

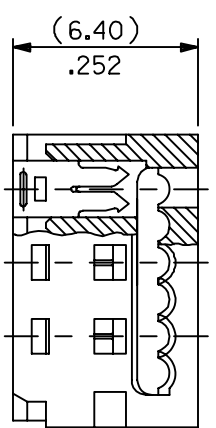
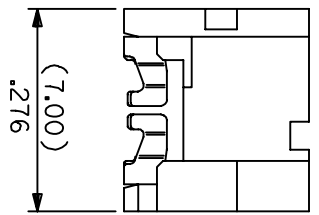
REV	ECN NO.	DATE	DESIGN
REV1	ECNNO.1	DATE1	DESIGN1
REV2	ECNNO.2	DATE2	DESIGN2

IDT CONTACT

MATL. PHOS BRONZE (0.17)/.0066
 THK HW 180-200
 PLATING. TIN: (2-4um)/80-160u" PURE TIN
 PLATING. GOLD: (1.3um)/50u" MIN. NICKEL
 UNDER (0.76um)/30u" SELECTIVE GOLD



SECTION SHOWING
 ASSY AFTER TERMINATION
 SEE NOTE 6



PART NO.	CCT SIZE	DIMENSION A	DIMENSION B
IAP2541H-26	26	(35.53)/1.399	(31.75)/1.250
IAP2541H-24	24	(32.99)/1.299	(29.21)/1.150
IAP2541H-22	22	(30.45)/1.199	(26.67)/1.050
IAP2541H-20	20	(27.91)/1.099	(24.13)/.950
IAP2541H-18	18	(25.37)/.999	(21.59)/.850
IAP2541H-16	16	(22.83)/.899	(19.05)/.750
IAP2541H-14	14	(20.29)/.799	(16.51)/.650
IAP2541H-12	12	(17.75)/.699	(13.97)/.550
IAP2541H-10	10	(15.21)/.599	(11.43)/.450
IAP2541H-08	8	(12.67)/.499	(8.89)/.350
IAP2541H-06	6	(10.13)/.399	(6.35)/.250
IAP2541H-04	4	(7.59)/.299	(3.81)/.150

SIGNATURE		DATE		TITLE: Micromodul connectors, pitch 1.27mm IDC Socket			
SIGNATURE		DATE3		P/N:		CUS. P/N:	
APP.		A		B		C	
DRN.		SCALE		CODE NO.		CODE NO.	
CHK.		UNIT		CUS. NO.		CUS. NO.	
APP.		PAGE		PAGE		TOLERANCE:	
A		D		E		F	
SKYSUKTRONICS INDUSTRIAL CO.,LTD.				DRAWING NO.			
DRAWING				PATH			